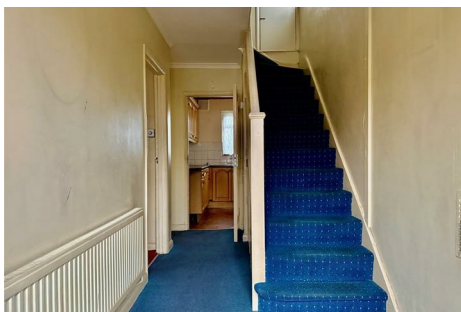




# Parkfields

Estates



## Ruislip Road , Greenford, UB6 9RN

Nestled on Ruislip Road in the charming area of Greenford, this end-of-terrace house presents a wonderful opportunity for those looking to make their mark on a property. While some updating is required, this home offers a blank canvas for potential buyers to create their ideal living space.

Conveniently located near Greenford High School, this property is perfect for families seeking proximity to quality education. The house also benefits from a garage situated in a block, providing essential off-street parking and additional storage options.

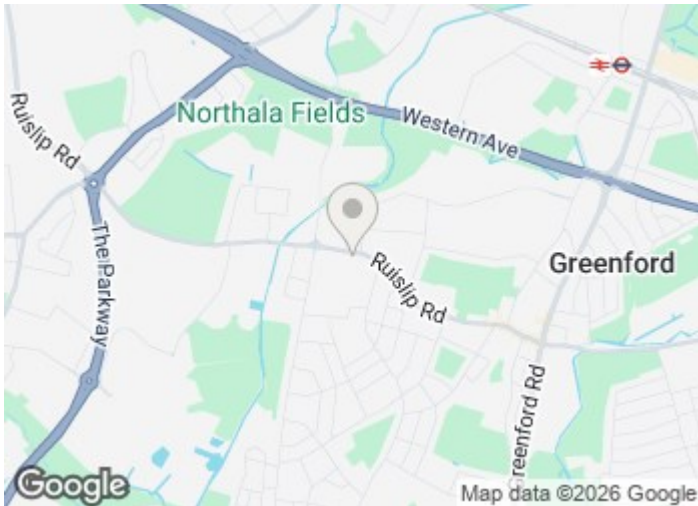
One of the standout features of this property is that it comes with no onward chain, allowing for a smoother and quicker transaction process. This is an ideal opportunity for first-time buyers or investors looking to add value through renovation.

Asking Price £485,000

## 241 Ruislip Road , Greenford, UB6 9RN



- END OF TERRACE
- KITCHEN
- EASY ACCESS TO THE A40
- THREE BEDROOMS
- BATHROOM/WC
- SOME UPDATING REQUIRED
- TWO RECEPTION
- JUST BY GREENFORD HIGH SCHOOL
- NO CHAIN



Directions





Floor Plan

These particulars, whilst believed to be accurate are set out as a general outline only for guidance and do not constitute any part of an offer or contract. Intending purchasers should not rely on them as statements of representation of fact, but must satisfy themselves by inspection or otherwise as to their accuracy. No person in this firms employment has the authority to make or give any representation or warranty in respect of the property.

